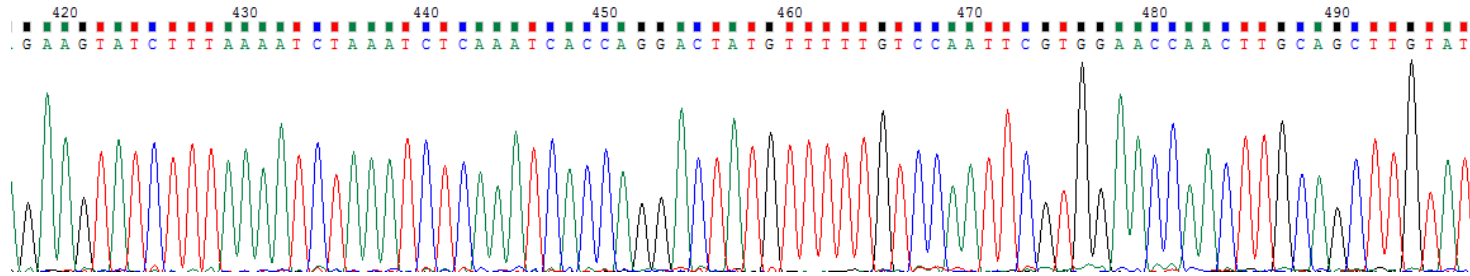
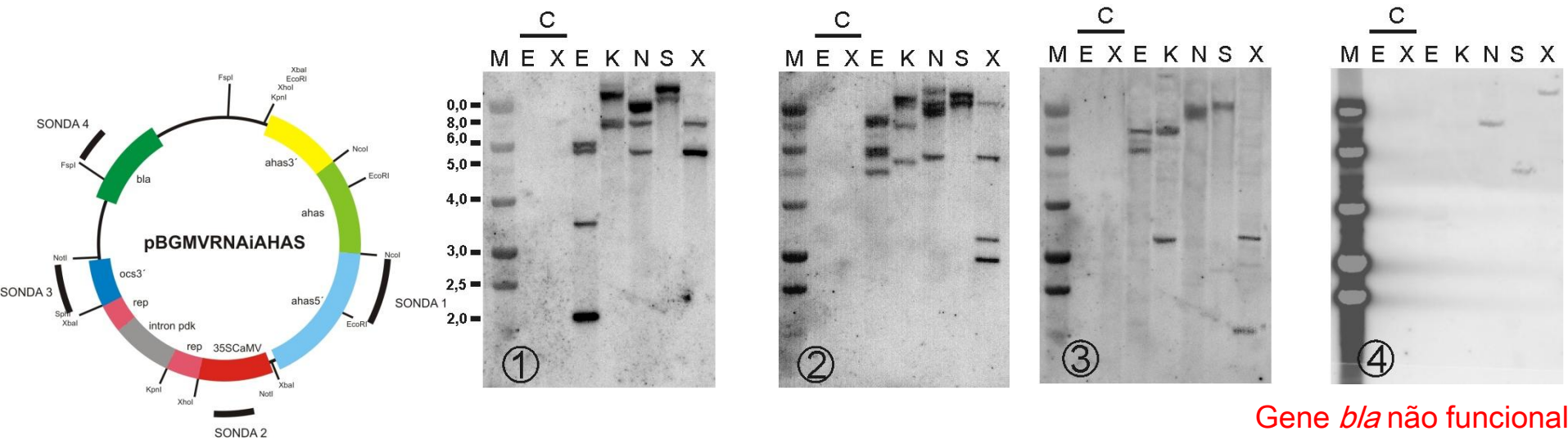


Santo Antônio de Goiás, GO
Londrina, PR
Sete Lagoas, MG

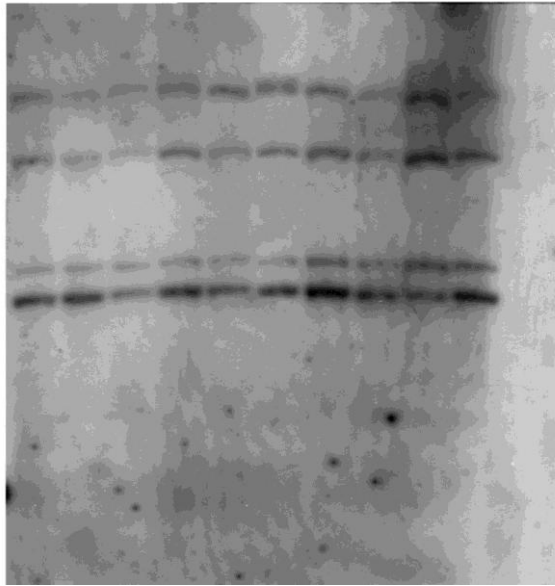


Sequenciamento completo do sítio de integração dos transgenes (50.029 pb)

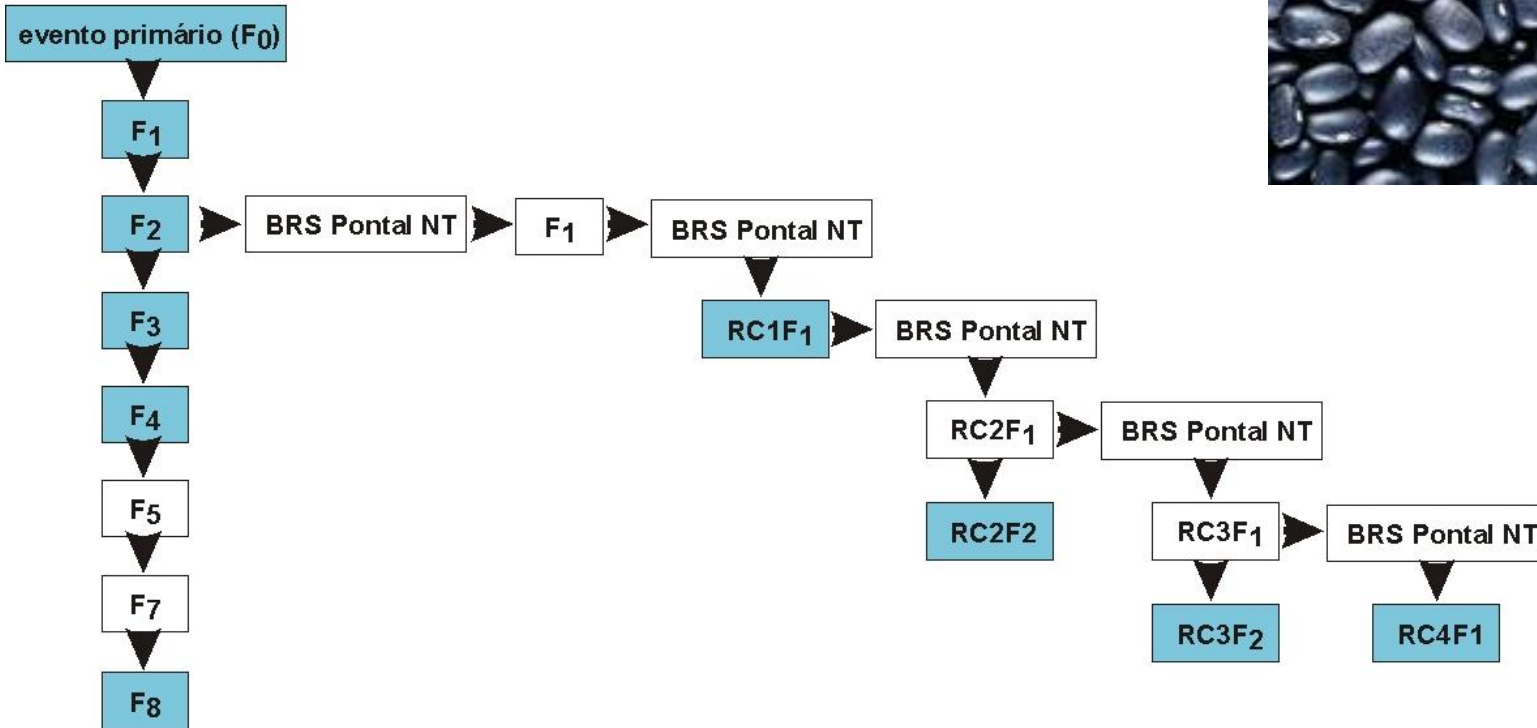
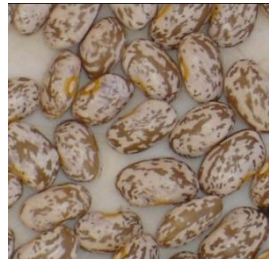


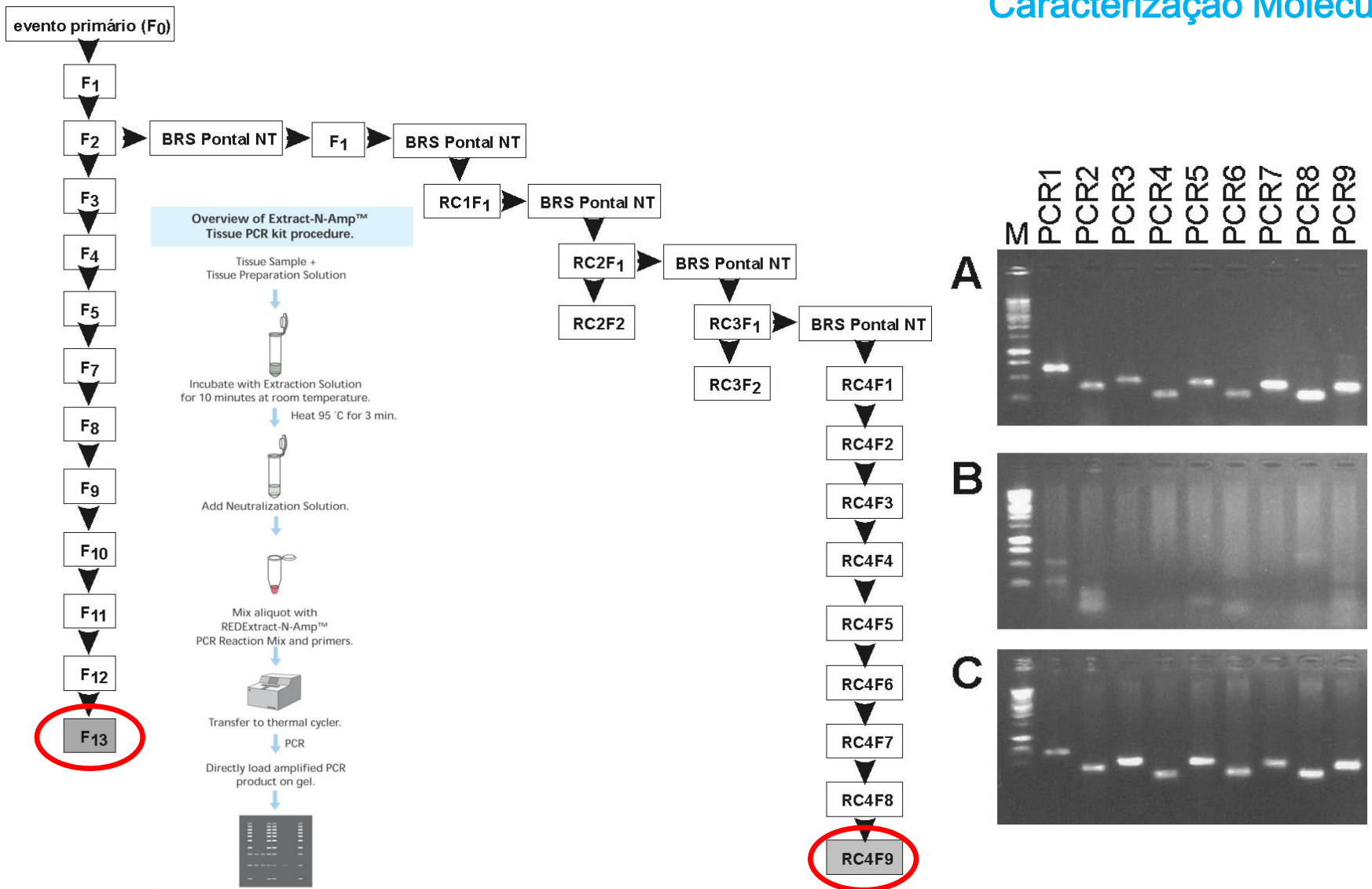
Único lócos: segregação de 3:1

1 2 3 4 5 6 7 8 9 10 11



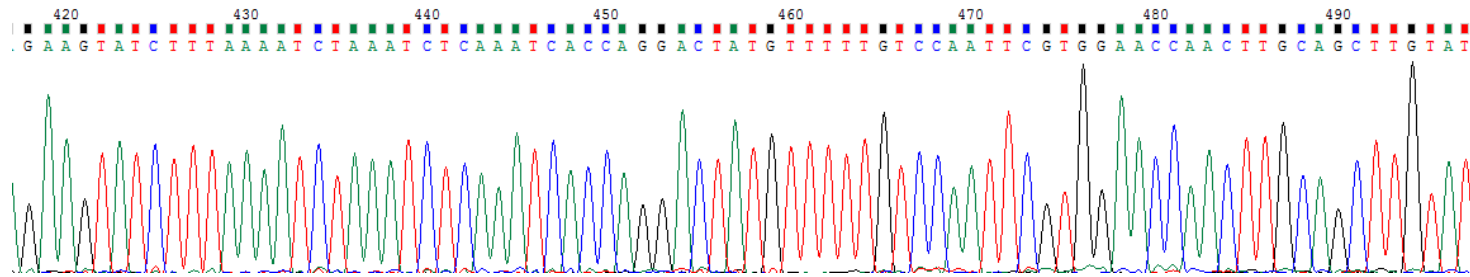
Estabilidade dos transgenes
Gerações e após cruzamentos



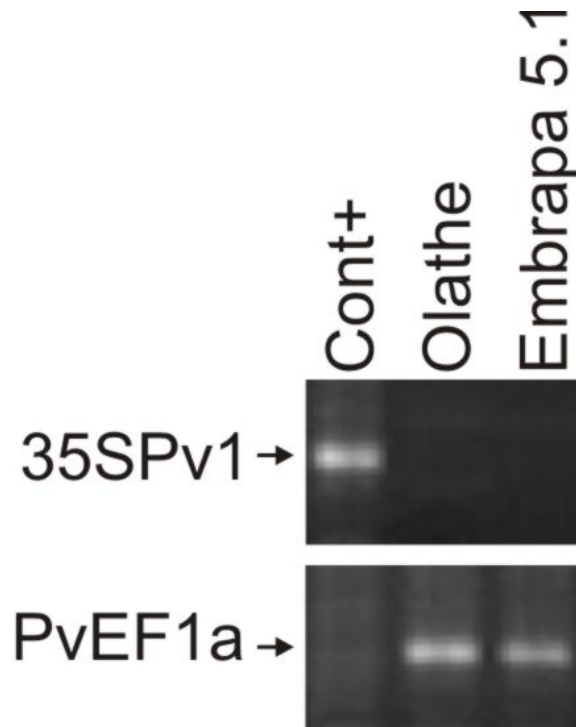


Extract-N-Amp™ Tissue PCR Kit, Sigma-Aldrich, Código XNAT2R

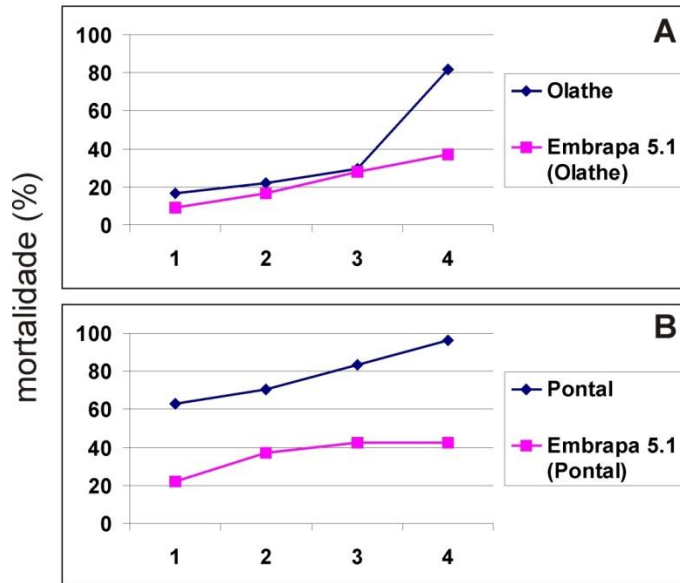
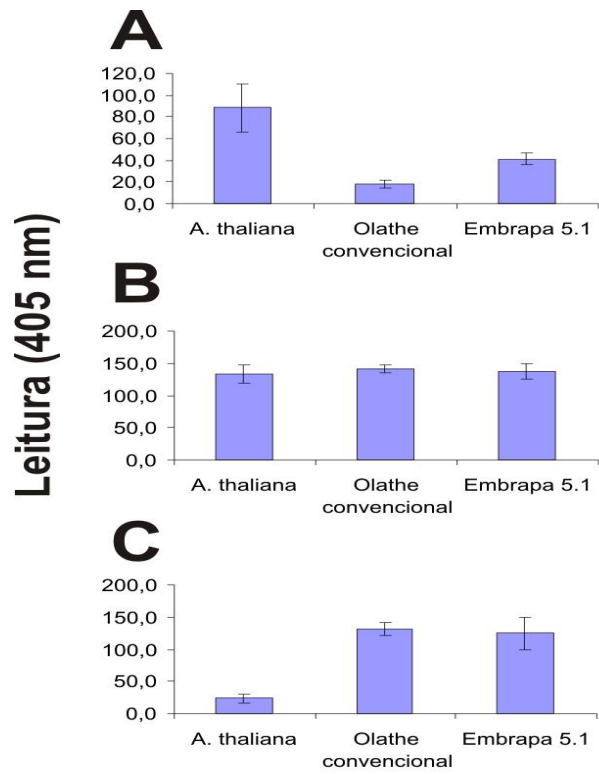
Xin et al. 2003. BioTechniques 34:820-826

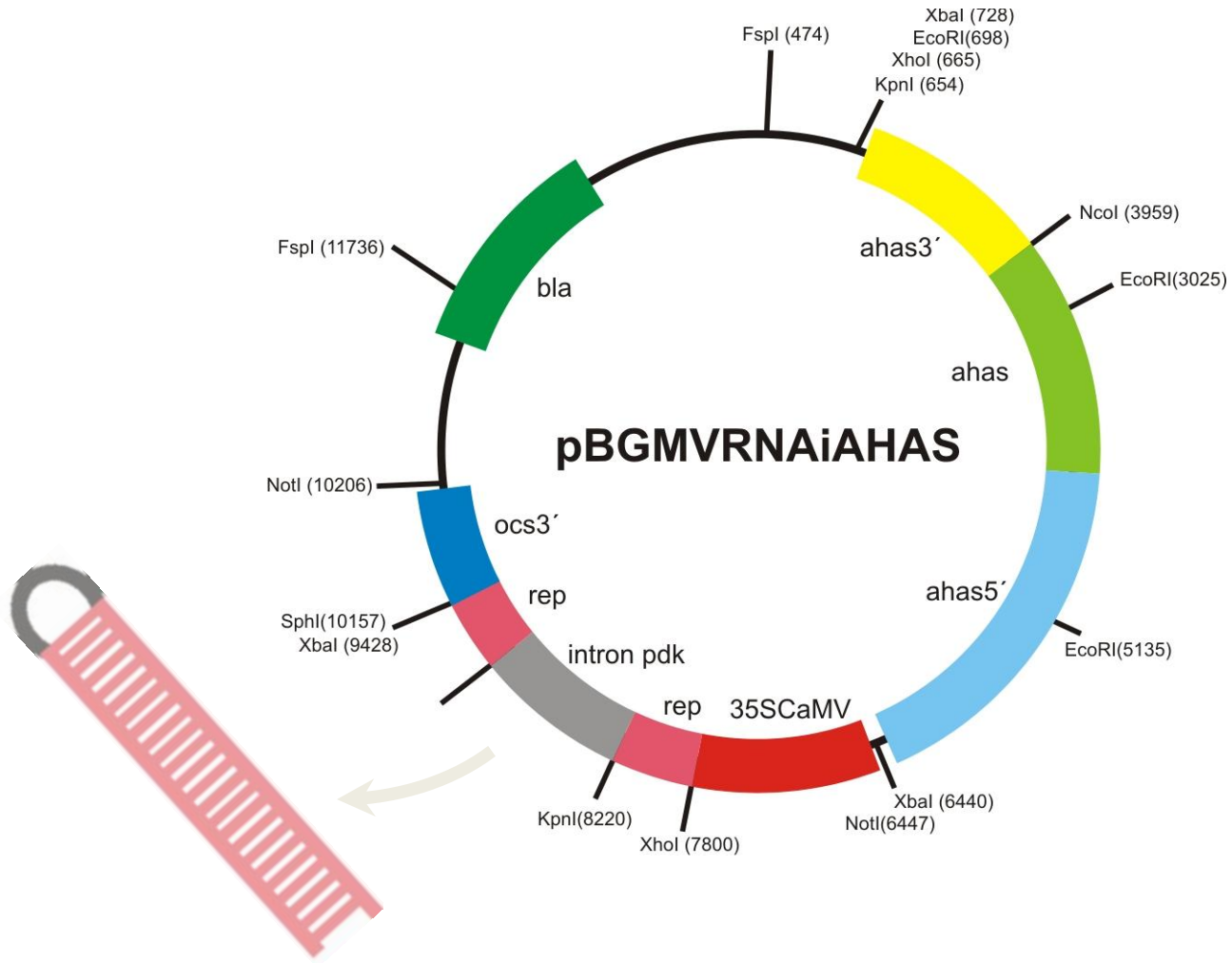


ATG GCG CAC GGC TCC GGT AGA GAG GTC AGC TGT TAA
M A H G S G R E V S C



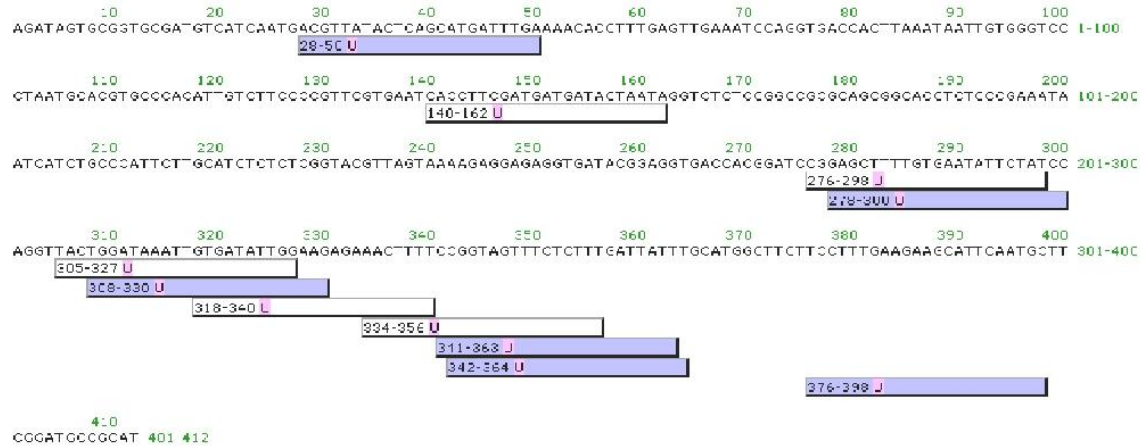
Falta de elementos importantes na região 3 do promotor



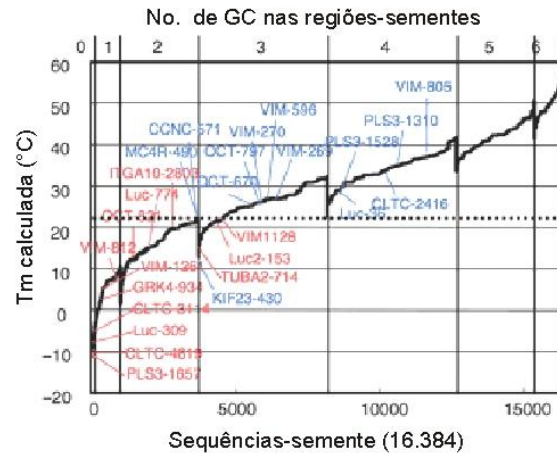


Potencial de efeito inespecífico (“off-target”)

A



B



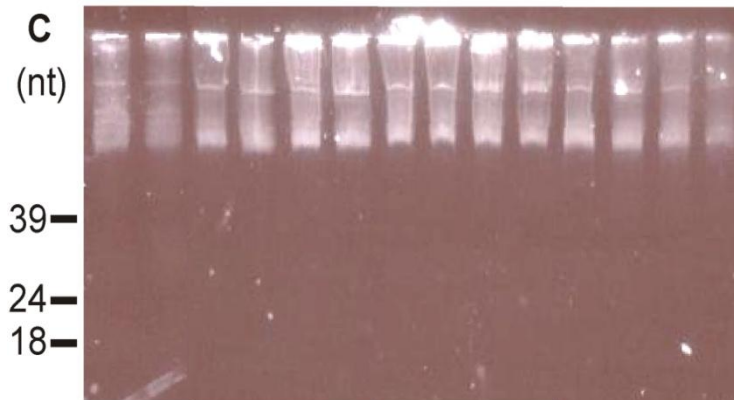
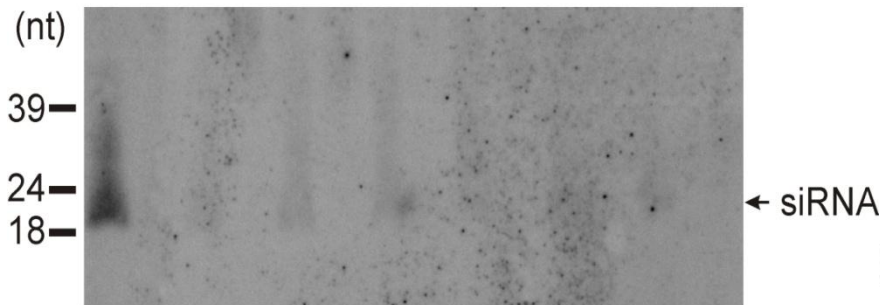
Mammalia
Insecta
Chromadorea



sementes

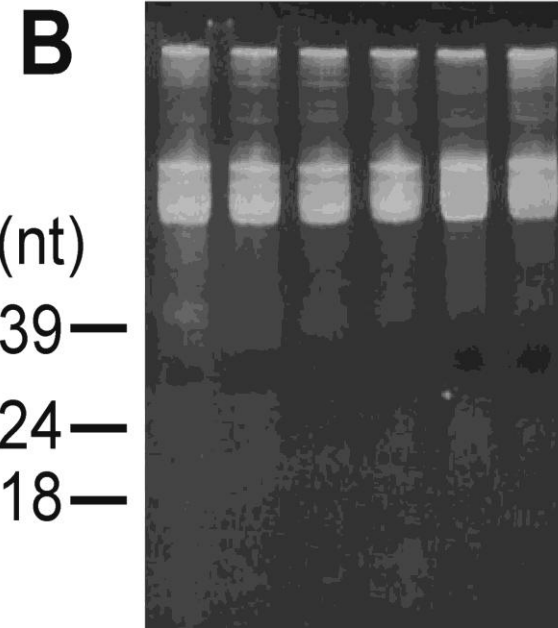
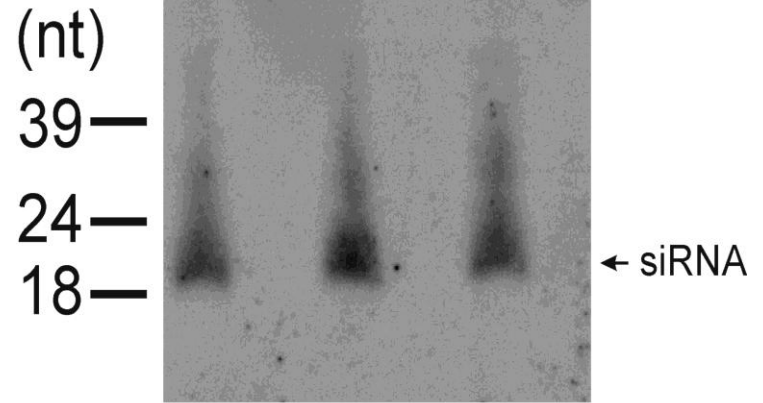
B

folha	sementes								seca	emb.	
T	NT	1	NT	2	NT	3	NT	4	NT	T	NT



A

PR		GO		MG	
T	NT	T	NT	T	NT



Folha

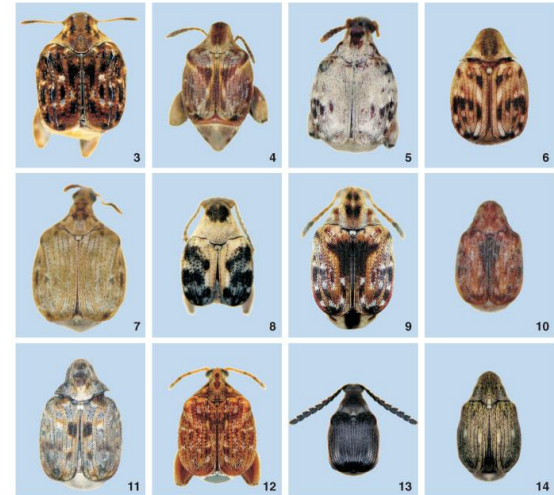
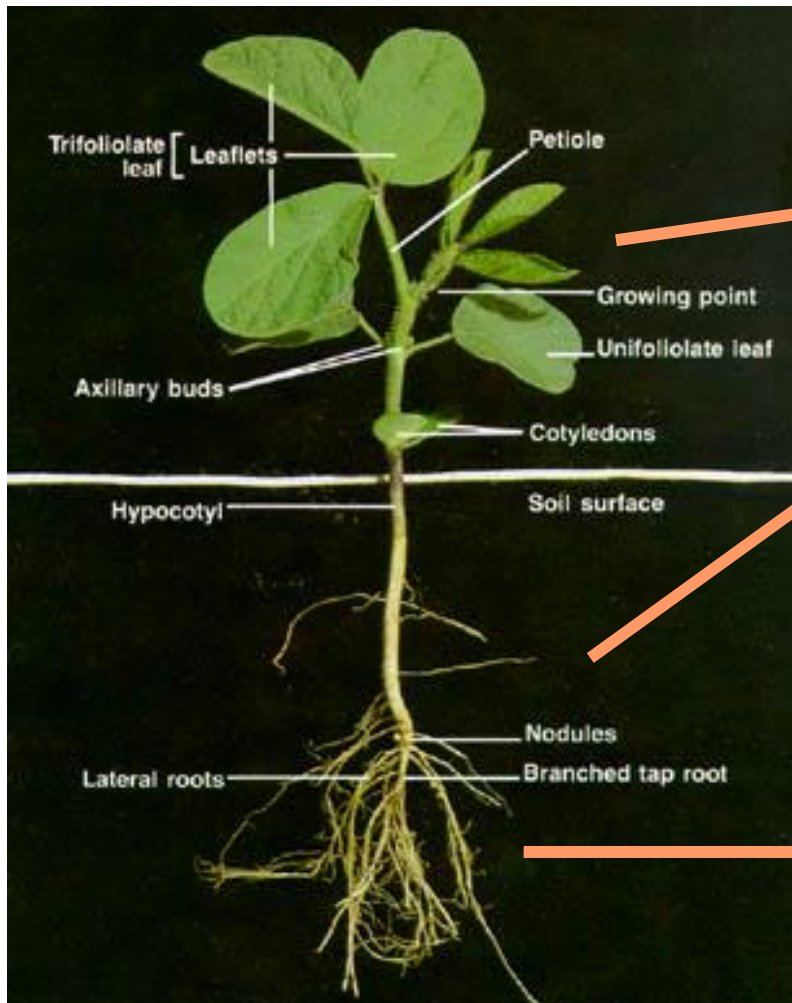
Produção, germinação, altura inicial das plântulas, largura máxima das folhas primárias, comprimento máximo das folhas primárias, número de sementes por vagem, massa de 100 sementes, comprimento das vagens, largura das vagens, comprimento das sementes, largura das sementes, espessura das sementes, florescimento (13 características)

Table 1 Agronomic traits in bean transgenic line 5.1 cultivated in the field during low-disease-incidence season in three regions of Brazil

Trait	Goiás ^a		Minas Gerais ^a		Paraná ^a	
	Control	Transgenic	Control	Transgenic	Control	Transgenic
Yield (kg/ha)	770.8	628.1	2,460	2,476	2,268	2,344
Seed germination (%)	86.9	91.4	87.9	85.4	75.2	86.2
Initial plant height (cm)	10.4	10.2	13.6	13.5	9.9	9.7
Width of the leaves (cm)	6.8	6.7	7.4	7.3	6.4	6.3
100-seed weight (g)	27.3	29.7	31.0	32.1	31.4	32.7
Flowering time (days after germination)	31	31	32	32	30	30
Seeds per pod	5.8	5.7	5.3	5.4	5.6	5.7

*Statistical analyses revealed no significant differences ($P < 0.05$; Tukey studentized range test, $n = 8$) between transgenic and control lines. [AU: * not found in table; ^a not explained in legend. Does the * refer to the ^a instead? If the P value applies to all data in the table, it is not necessary to include a footnote on all columns — just state in legend.]

Avaliação de Segurança Ambiental



Figuras 3-14. Vista dorsal: (3) *Caryedes brasiliensis*; (4) *C. godmani*; (5) *C. helvinus*; (6) *C. paradisiensis*; (7) *C. stenocephalus*; (8) *Ctenocolum colburni*; (9) *C. tuberculatum*; (10) *Gibbobruchus minus*; (11) *G. scura*; (12) *G. speculifer*; (13) *Melobomeus cyanipennis*; (14) *M. musculus*.

